

PART OF THE NW 1/4, OF SEC. 2, T.6N., R.1E., S.L.B. & M.

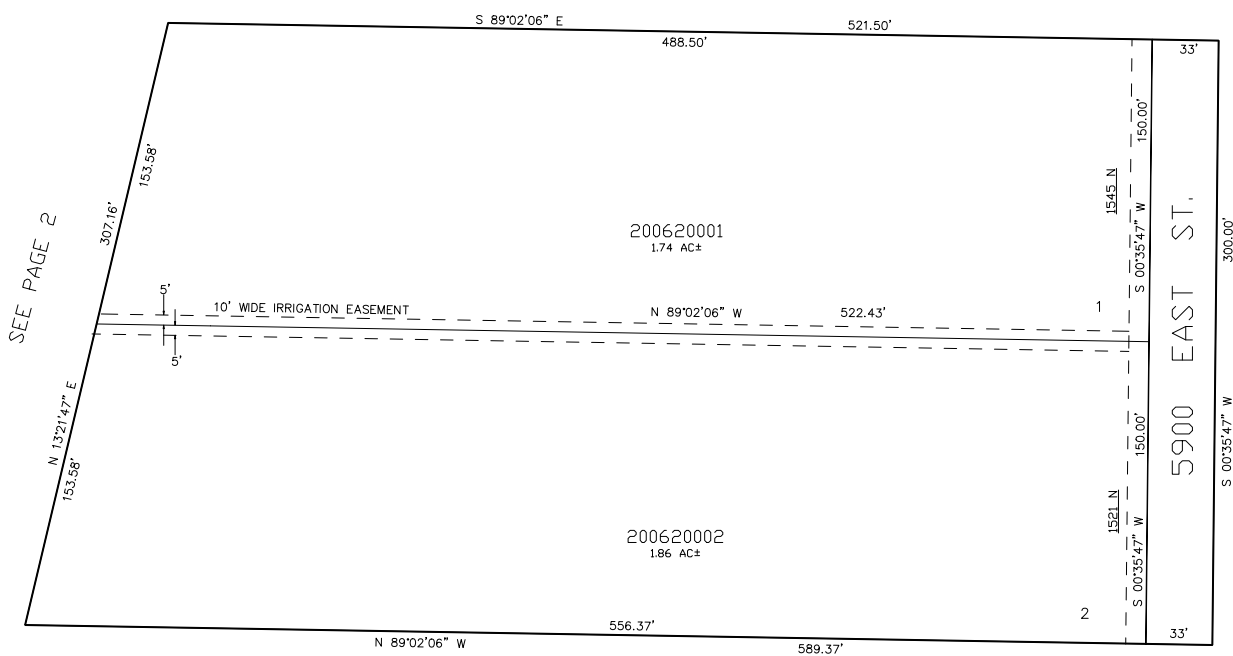
BLANCHARD SUBDIVISION

IN WEBER COUNTY

SCALE 1" = 50'

TAXING UNIT: 317

SEE PAGE 2



SEE PAGE 2

SEE PAGE 2

FOR COMPLETE ENG DATA SEE  
ORIGINAL DEDICATION PLAT IN  
BOOK 43, PAGE 42 OF RECORDS.

10' UTILITY & DRAINAGE EASEMENTS EACH  
SIDE OF PROPERTY LINES AS INDICATED  
BY DASHED LINES EXCEPT AS OTHERWISE  
SHOWN.